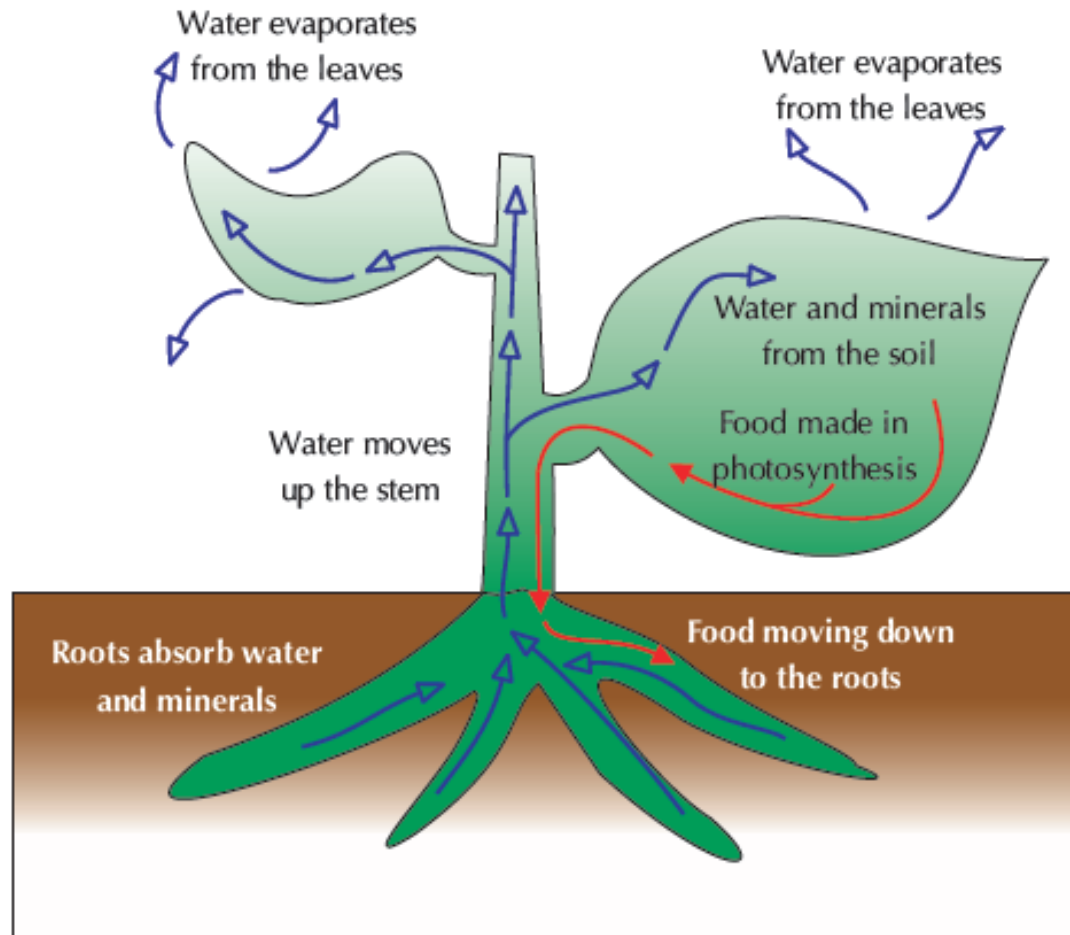


Chapter 14: Transport in Plants.

Plants have a transport system just like in humans. In plants, minerals and water get transported from the root to the leaves and food from the leaves get transported throughout the plant.



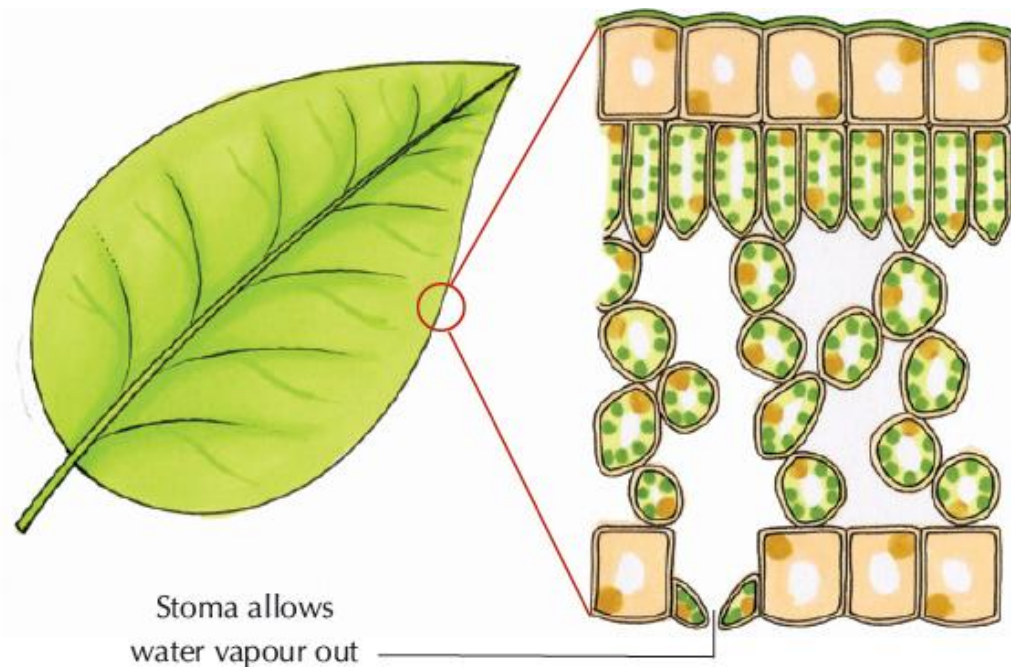
The flow of water from the root to the leaves is called the **transpiration stream**

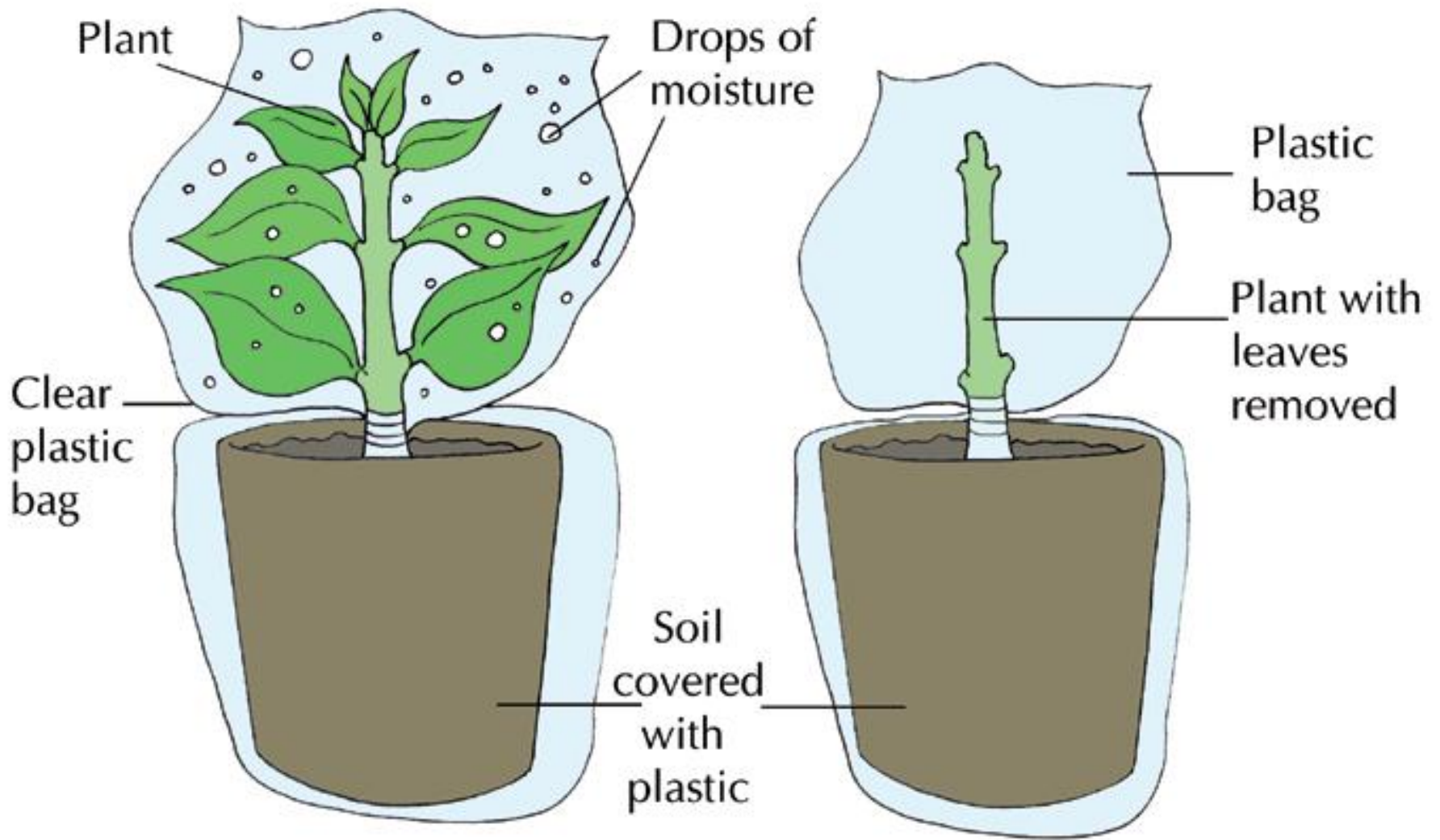
Definition: Transpiration is the loss of water vapour from the leaves of a plant.

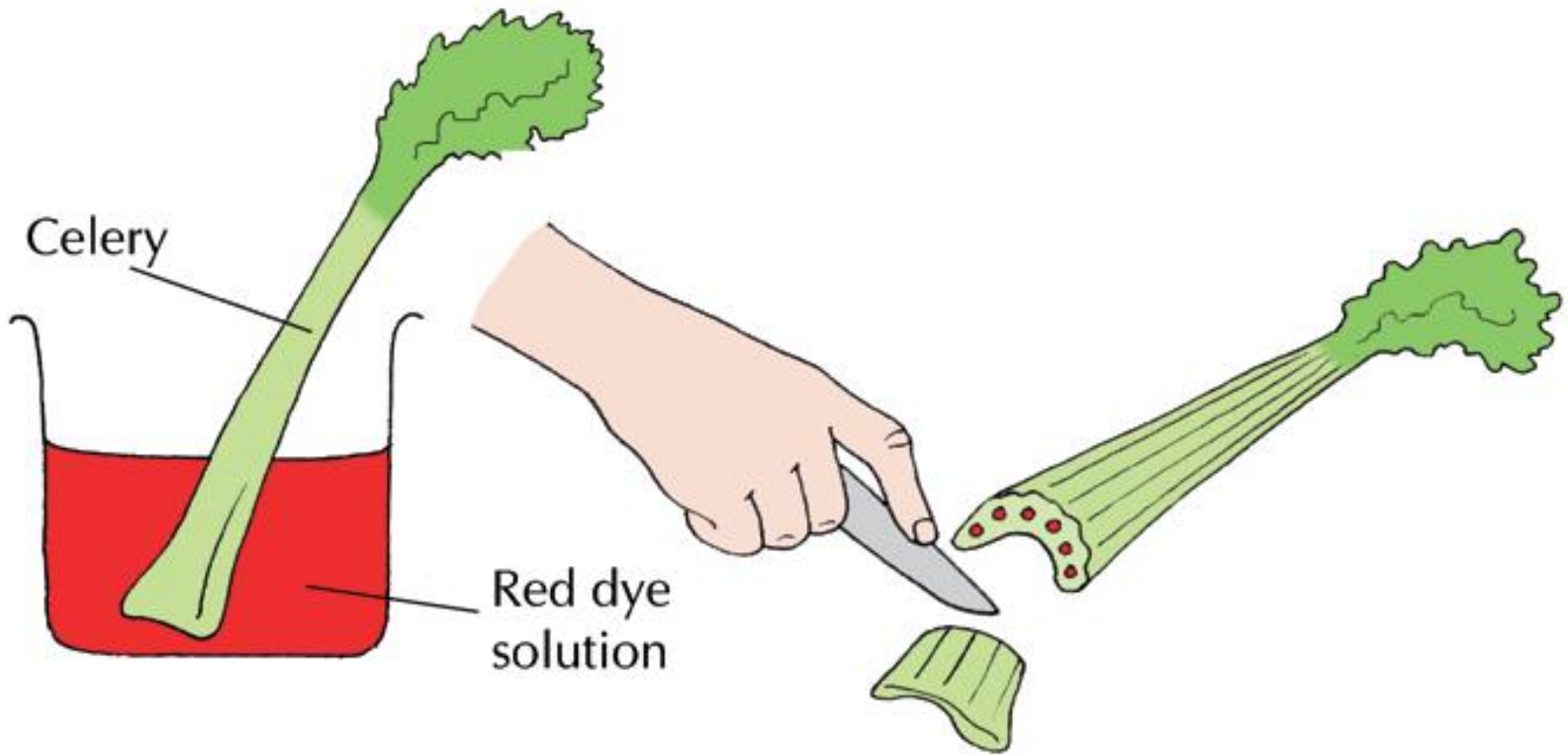
Water is lost through tiny pores in the leaf called **stomata**.

Functions of transpiration.

- Carry water to the leaves for photosynthesis
- Carry minerals from the roots
- Cool the plant down







Celery

Red dye solution

Factors affecting Transpiration.

1. Sunlight:- too much causes the stomata to open more and water evaporates.
2. Wind:- wind increases transpiration as it blows water vapour of the leaf.
3. Humidity:- water evaporates quicker in low humidity or dry air
4. Soil water:- if there's too much water in the soil, more will be transpired.

Vessels or Tubes.

The plant has 2 types of vessels

- Xylem Vessels carry water and minerals up the plant
- Phloem Vessels carry food made in the leaves to the rest of the plant.

